



Michigan District, LCMS

People of Hope ... Vigorously Making Known the Love of Christ

An accounting of the mission and ministry through the Michigan District, LCMS by its congregations.

Fiscal year ending January 31, 2011

Mission

In grateful response to God's grace and empowered by the Holy Spirit through Word and Sacraments, the mission of the Michigan District of The Lutheran Church–Missouri Synod is vigorously to make known the love of Christ by word and deed within our churches (congregations), communities, and world.

Vision

Our congregations are filled with people[1] of HOPE! ... who continually give joyful, confident witness to the miraculous Christ. Our joy and confidence comes from our faith in the transforming power of the Gospel and the empowering Christ. Living transformed, empowered lives of faithfulness, harmony, and integrity, we display an ever increasing dependency on, devotion to, and commitment to Worship, the Word of God, prayer, and each other which moves us to take the love of Christ to the lost in word and deed.

[1]Professional Church Workers (PCWs), Congregational Leaders, and congregants.

Michigan District Statistics

Congregations: 380

Baptized Members: 211,569

Communicant Members: 160,291

Preschools: 76

Elementary Schools: 83

High Schools: 7

Dear Friends in Christ,

It is a privilege and blessing to have the opportunity to reflect and share with you the ways in which God has richly poured out His mercy and grace upon the Michigan District, LCMS during the past fiscal year.

It is with great joy that I share the District's newest development of a tagline for the Michigan District, which begins with these words:

"People of Hope ..." That is who we are, what we have, and what we are able to offer and share. Peter reminds us that, *"... In his great mercy he has given us new birth into a living hope through the resurrection of Jesus Christ from the dead"* (1 Peter 1:3 NIV).

Hope in the Bible is never a wishy-washy "maybe," an uncertain "possibility," or an unsure "optimism." Scriptural hope is the confident expectation, the sure certainty that what God has promised in the Word is true, has occurred, or will occur according to His Word. It is never static or passive but a dynamic, active, directive, life sustaining, gracious reality! In other words, it is not an escape from reality or from our problems, but because it is based on God's promises, it puts us in gear. It changes how we see ourselves, what we value, and what we do with our lives in Christ. Because our *"faith and hope are in God"* (1 Peter 1:21 NIV) we hope for, look forward to, and are energized by, God's presence, peace, and power in our present ministry endeavors and **those that He will lead us into in the future.**

In Christ, the best is yet to come. I thank God that we are ***"People of Hope"*** because it truly is what Michigan needs.

In His Shared Service,

President

Michigan District, LCMS

Michigan District, LCMS Dollars at Work:

Community Outreach

Journey Lutheran Church in New Buffalo is located in a unique setting. The city has a winter population of 3,500 people, but during the summer, it grows to over 10,000. Located in southwest Michigan, it is a summer vacation destination and second home for many Chicago area residents. Casino employment attracts young families to the area.

Journey, a mission in process, is implementing different ways to reach this demographic with the Gospel of Jesus Christ. The congregation is working with the City of New Buffalo to open a day care center.

“As we work for the completion of the day care, we believe this will allow for an opportunity to reach more of the unchurched population,” says Journey’s pastor, Rev. Randy Johnson. The congregation also offers a contemporary worship service.

May the Lord continue to bless Journey’s ministry as it is supported prayerfully and financially through the Michigan District budget and *The Future is Now* campaign.



Journey, New Buffalo averages 20-25 people in worship on a weekly basis.

“Last September, Concordia University Ann Arbor greeted a sizeable new class, perhaps its largest in history. Several factors contributed to attracting this large and talented group of freshmen—one major factor was the scholarships provided by the Michigan District, LCMS. Families were searching for ways to meet college costs, and the addition of these scholarships to their financial aid packages made a huge difference, allowing the student to choose Concordia over other choices. I am deeply grateful to the District’s leadership and to the benefactors who made these gifts possible.”

Dr. Russell L. Nichols
Interim CEO
Concordia University Ann Arbor

Student Aid

Future professional church work students from Michigan District congregations continue to be recipients of significant scholarship support. These scholarships were provided from various Michigan District funding sources, including *The Future is Now* campaign which provided \$83,000 of the total funding amount of \$221,950.

Overall, 127 students were awarded financial scholarships for the 2010/2011 school year. Scholarships were given to 45 seminary students (\$2,300 per student), 31 Concordia University Ann Arbor students (\$1,840 per student), and 51 students who attended other Concordia University System schools (\$1,380 per student).

As a direct result of congregation and individual giving, these men and woman were supported financially as they prepare to be the next generation of pastors, teachers, and leaders in churches and schools.

2010 All Pastors’ Conference

“Not All Who Wander are Lost,” was the theme of the 2010 All Pastors’ Conference, which looked at ways to reach those aged 20-29 who have left the church. Identified in a large study was the need to talk about serious faith issues with children at an age earlier than previously thought.

Conference speaker Tony Cook, assistant professor of practical theology at Concordia Seminary, St. Louis, Mo., laid a foundation with the topic “How to Speak Postmodern.” Ken Ham of *Answers In Genesis* suggested to the participants that the reason the world is stealing away our children is that the church never seems to address the questions of the real world. During a time in their lives, when the world is challenging the factual and historical basis of their faith, the church is saying, “It’s all true. Just trust us.”

Rev. Douglas Adams, author of the conference blog, says, “All evidence is telling us we need to wake up. How will we begin to do this? For some, it might begin with diving into social media. For others, it might be starting a Confessions study group. For me, it will begin by offering a prayer service ... seeking God’s direction for the next steps.”

Since the conference, several congregations have hosted *Answers In Genesis* conferences to bring about an awareness of these challenges and begin the education process.



“Science, properly understood, is a Christian vocation. It is a joy to study and understand God’s created order. We should not be afraid to join our children in studying the problems and challenges that science seems to pose for us. By doing so, we are preparing them to face a confrontation with the world that is coming a lot sooner than many of us expect.”

Rev. Donald Neuendorf
Pastor - St. Paul, Ann Arbor
Chair - 2010 APC Committee

Michigan District of The Lutheran Church—Missouri Synod

Summary of Financial Activities For the Year Ended January 31, 2011

Support, Revenues, and Gains

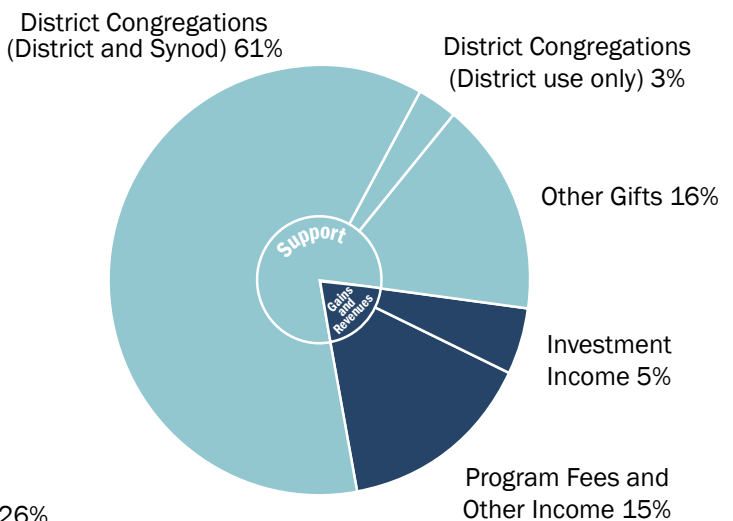
District Congregations (District and Synod).....	4,584,603
District Congregations (District use only).....	258,771
Other Gifts.....	1,167,596
Investment Income.....	413,999
Program Fees and Other Income.....	1,105,622
Total Support, Revenues, and Gains.....	<u>7,530,591</u>

Expenses

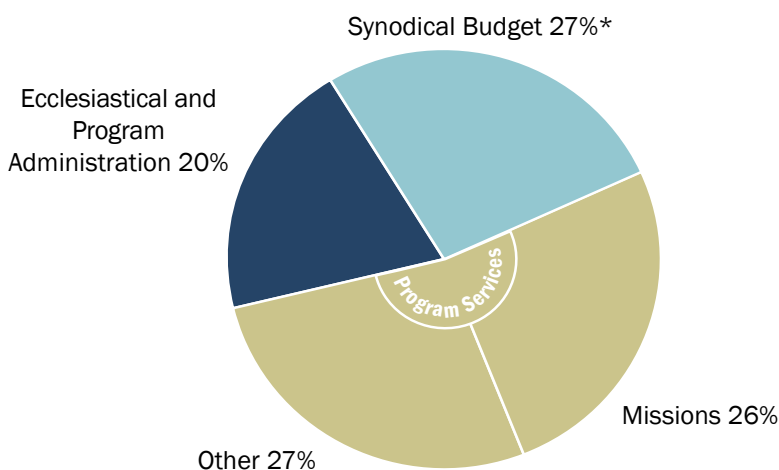
Synodical Budget*.....	1,994,141
Program Services	
Missions.....	1,954,484
Congregation Ministry Facilitators.....	316,247
Christian Care.....	133,874
Lutheran Schools.....	303,131
Youth Ministry.....	75,352
Loon Lake Lutheran Retreat Center.....	22,257
Other Congregation Program Services.....	175,956
Communications.....	239,687
Student Aid.....	320,006
Worker Care.....	428,182
Ecclesiastical and Program Administration	
Administration.....	695,331
Convention.....	383,325
Development.....	197,603
District Properties and Depreciation.....	250,828
Total Expenses.....	<u>7,490,404</u>

Change in Net Assets (including *The Future is Now* pledges)..... 40,187

Revenue



Expenses

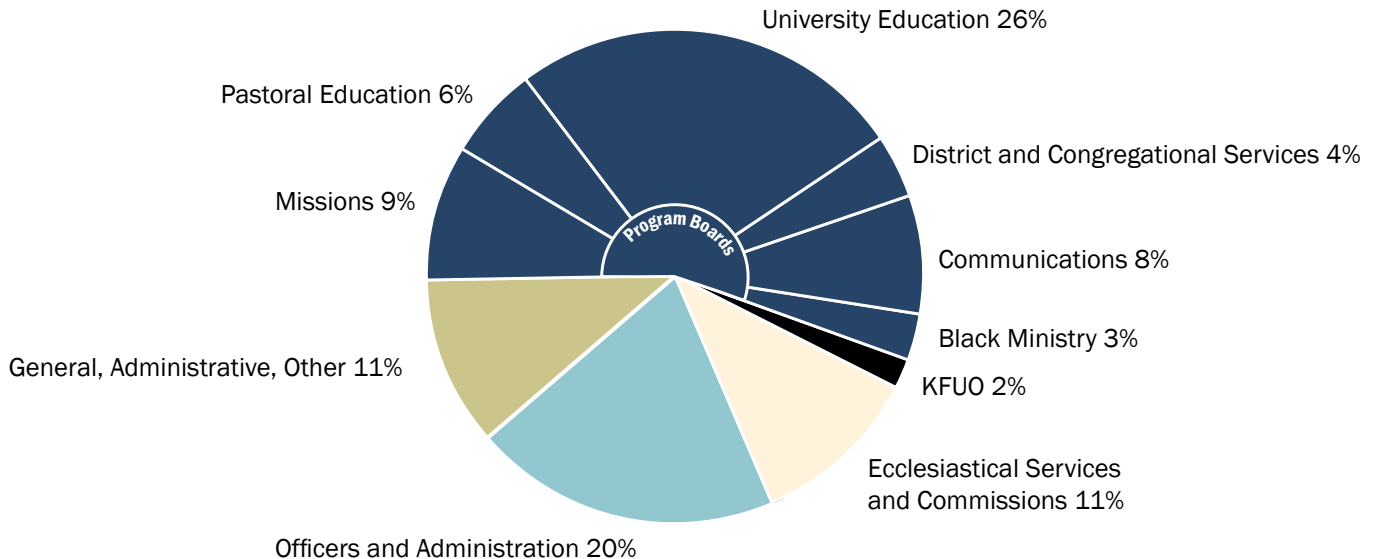


Information is taken from the audited financial statements of the Michigan District, LCMS. Copies of the audit report, which include all integral parts of the financial statements, are available from the District Office.

*The Michigan District sent 50.5% of its unrestricted cash receipts from congregations to national Synod during the fiscal year. The numbers on the financial statements reflect adjustments based on pledges from congregations and to the Synod as required by Generally Accepted Accounting Principles.

Support for National and International Ministries

During the fiscal year ending January 31, 2011, the Michigan District remitted \$2,459,141 to Corporate (national) Synod, which represents 50.5% of the District's unrestricted gifts from congregations. The 35 districts of the Synod contribute roughly \$17 million of undesignated revenue to Corporate Synod annually in support of national and international mission and ministry. The balance of the \$87 million 2010/11 budget of Corporate Synod comes primarily from restricted gifts and sales of materials and services. The Program Budget Summary for Corporate Synod indicates that 55.5% of the undesignated revenue is allocated directly to the activity handled by the former Program Boards of Synod (including 9.3% for missions and 31.9% for education). **The accompanying chart indicates the various allocations of the budgeted use of undesignated revenue for the fiscal year ending June 30, 2011.**



Michigan District

Board of Directors (2009-2012)

Rev. David P. E. Maier, President
 Rev. Mark D. Brandt, 1st Vice President
 Rev. David A. Davis, 2nd Vice President
 Rev. Dr. K. Frank Graves, 3rd Vice President
 Rev. John M. Duerr, 4th Vice President
 Rev. David H. Reed, Secretary
 Mr. William H. Young, Treasurer

Metro East Region:

Rev. Norman A. Koy
 Dr. Stanley R. Topel
 Mr. Stephen R. Boergert
 Mr. John E. Held

North & East Region:

Rev. Paul D. Theiss
 Mr. James C. Anderson
 Dr. Dale D. Gust
 Mr. Larry A. Bauermeister

West Region:

Rev. Dieter E. Haupt
 Mr. Richard C. Krueger
 Mrs. Ruth E. Martin
 Mr. John C. Raffel

Metro West Region:

Rev. Paul M. Moldenhauer
 Dr. Harvey M. Schmit
 Mrs. Chris Chauvin
 Mr. Duane A. Renken



Michigan District of The Lutheran Church—Missouri Synod | 3773 Geddes Road, Ann Arbor, Michigan 48105-3098

Phone: 734.665.3791 | Toll Free: 888.225.2111 | Fax: 734.665.0255 | michigandistrict.org | [facebook.com/milcms](https://www.facebook.com/milcms) | twitter.com/milcms

People of Hope ... Vigorously Making Known the Love of Christ